

# Supporting Translation of Research in Rural and Regional Health Settings: The Role of the Mentor

Alison Beauchamp<sup>1</sup>, Olivia King<sup>2,3</sup>, Anna Wong Shee<sup>3,4</sup>

<sup>1</sup> Monash University School of Rural Health; <sup>2</sup> Western Alliance; <sup>3</sup> Deakin Rural Health; <sup>4</sup> Grampians Health

## Background

Research generated within healthcare settings can reflect local needs and priorities more closely than that initiated by academic researchers. Strategies to increase uptake and translation of research into practice are crucial in rural settings, as these communities experience substantial health inequities and poor health outcomes.

Mentoring by experienced researchers is a key strategy for building research capacity in rural areas. However, the mentor role in the context of research translation is not well understood and may not be functioning optimally. Further work is needed to develop an evidence-based structure and guidance around the mentor role in research translation in rural and regional health settings.

## Aim

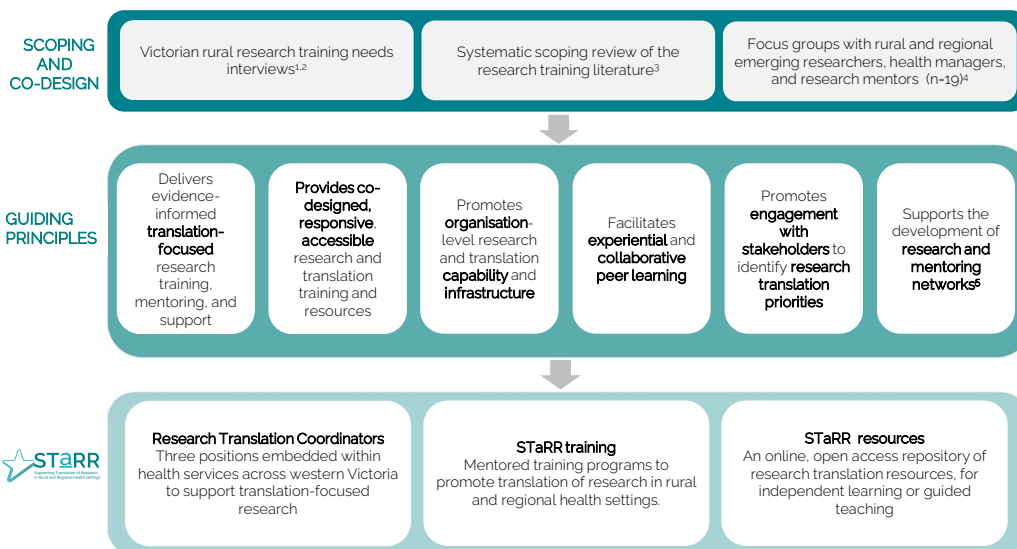
To co-design a framework that will underpin a structured approach to development of the research mentorship role to optimise clinicians' research translation capability.

## Methods

- 1) Conduct a scoping review of models and frameworks for research mentoring/coaching roles;
- 2) Interviews with research mentors to:
  - Explore the knowledge, skills and attitudes required for their role
  - Identify individualised support strategies they use;
- 3) Co-design a framework with mentors to support more effective implementation and evaluation of the role.

## Context

- **Supporting Translation of Research in Rural and Regional settings (STaRR)** is a mentored research training program for emerging researchers working in rural health settings (Fig 1).
- STaRR provides a region-wide approach to research capacity building, underpinned by principles of research translation.
- In partnership with experienced researchers (mentors), STaRR supports emerging clinician-researchers from seven rural health services in Western Victoria, Australia.
- Since 2021, over 40 research mentors and 112 clinician-researchers have participated in mentored training.
- Evaluation highlights that to strengthen this essential role:
  - The mentor role needs to be more clearly defined
  - The skills required to effectively mentor rural clinician-researchers need to be better described<sup>5</sup>



This work is about to commence. The purpose of presenting this poster is to generate discussion and identify approaches or models that could be adapted and utilised to achieve our aims.

Figure 1. Supporting Translation of Research in Rural and Regional settings (STaRR) Program – development and design

## References

1. Wong Shee A, Quilliam C, Corboy D, Glenister K, McKinstry C, Beauchamp A, Alston L, Maybery D, Aras D, Mc Namara K. What shapes research and research capacity building in rural health services? Context matters. *Aust J Rural Health.* 2022;30(3):410-21
2. Quilliam C, Wong Shee A, Corboy D, Glenister K, King O, Mc Namara K, Alston L, Aras D, Beauchamp A, McKinstry C. Design and implementation characteristics of research training for rural health professionals: a qualitative descriptive study. *BMC Medical Education.* 2023 Mar 30;23(1):200.
3. King OA, West E, Lee S, Glenister K, Quilliam C, Wong Shee A, Beks H. Research education and training for nurses and allied health professionals: a systematic scoping review. *BMC Med Educ.* 2022;22(1):385.
4. King OA, Sayner A, Beauchamp A, Hitch D, Aras D, Wong Shee A. Translating research into rural health practice: a qualitative study of perceived capability building needs. *Rural and Remote Health.* 2023;23
5. King OA, Sayner AM, Beauchamp A, West E, Aras D, Hitch D, Wong Shee A. Research translation mentoring for emerging clinician researchers in rural and regional health settings: a qualitative study. *BMC Medical Education.* 2023 Oct 31;23(1):817.

